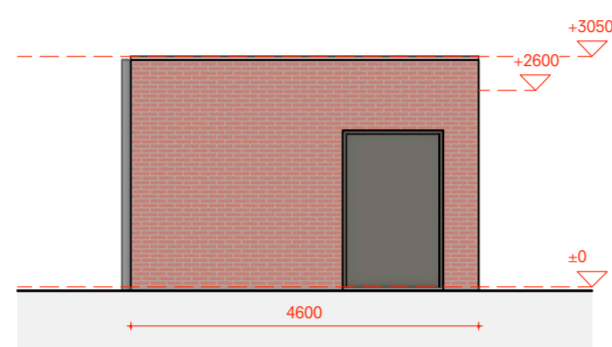


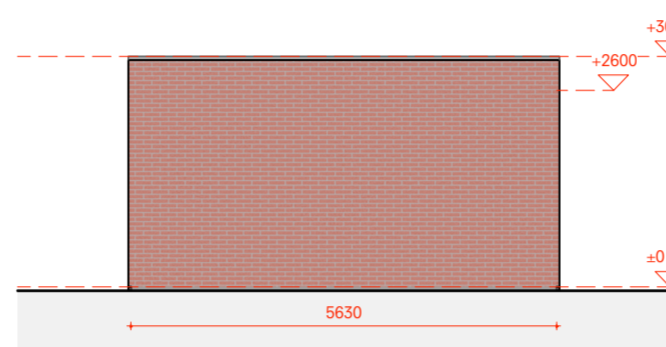
Voor- en achtergevel

Fietsenberg

GB2-1B GB5-1B GB5-2B GB6-1B
GB7-1B GB8-1B GB7-2B GB8-2B



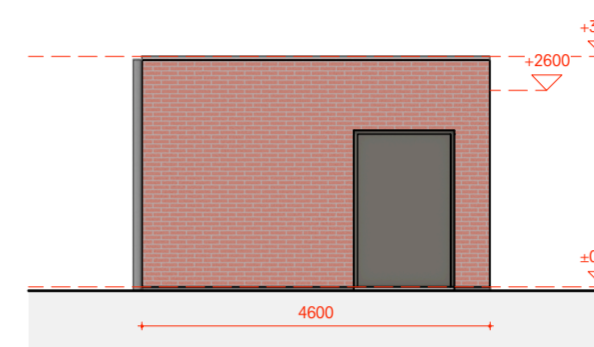
Rechterkopgevel



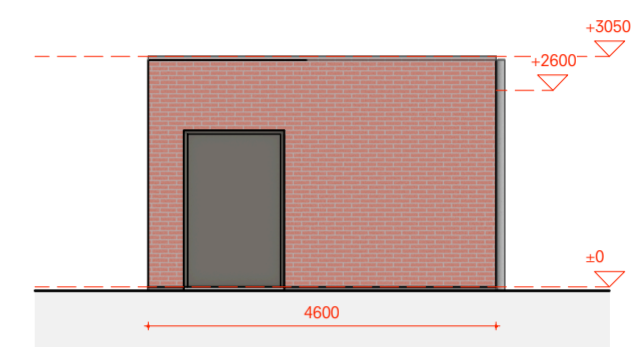
Voor- en achtergevel

Fietsenberg

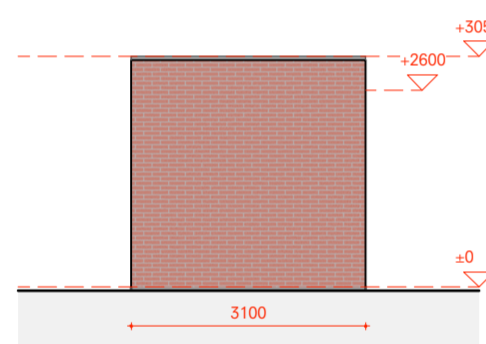
GB6-2B GB6-3B



Linkerkopgevel



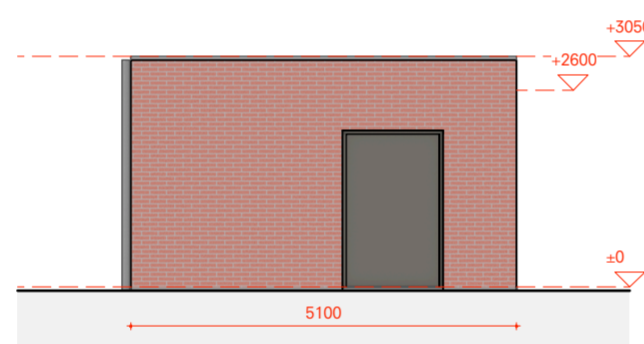
Rechterkopgevel



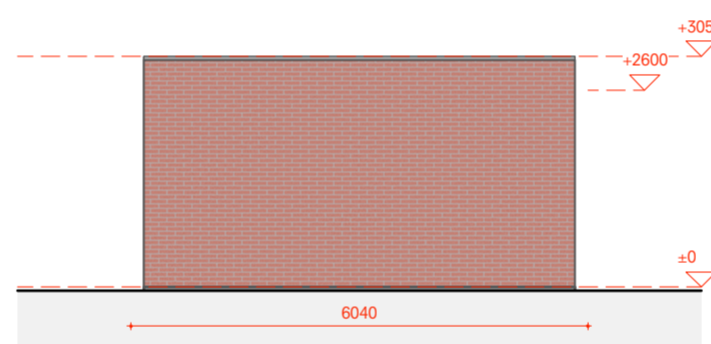
Voor- en achtergevel

Fietsenberg

GB4-1B GB4-4B



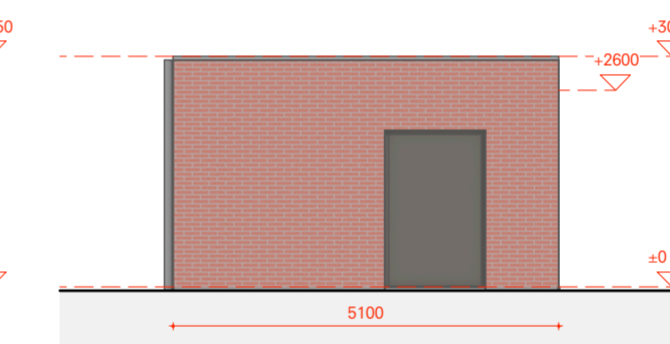
Rechterkopgevel



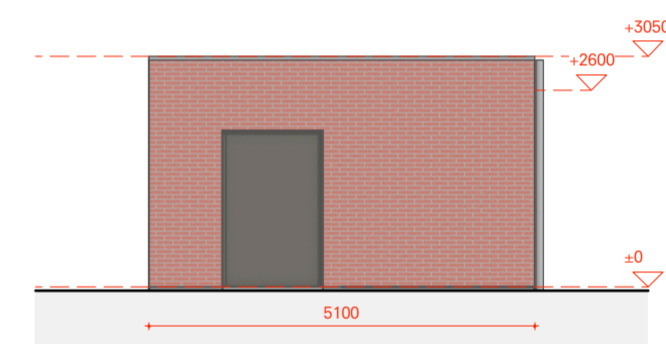
Voor- en achtergevel

Fietsenberg

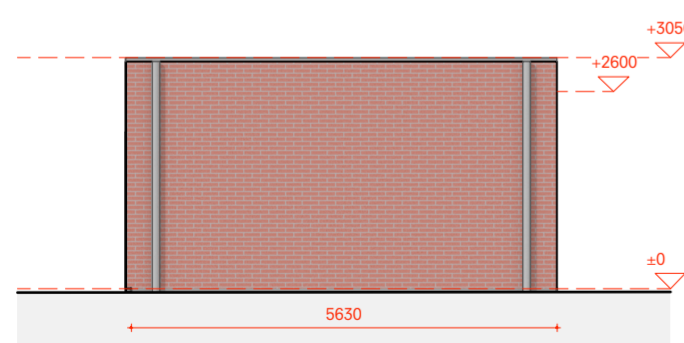
GB1-1B GB1-2B GB3-1B GB3-2B



Linkerkopgevel



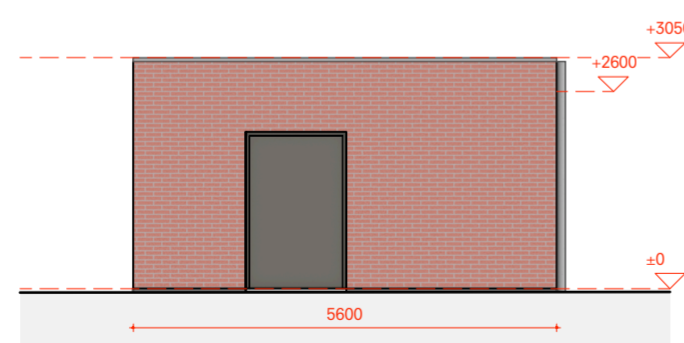
Rechterkopgevel



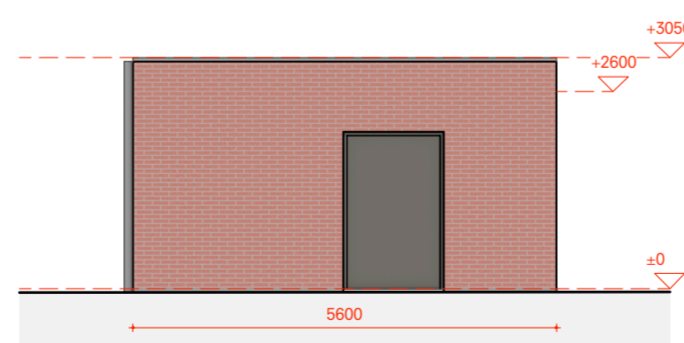
Voor- en achtergevel

Fietsenberg E

GB4-2B GB4-3B



Linkerkopgevel



Rechterkopgevel

De Nijl Architecten Samen werken aan de stad
Sint-Jobsweg 30 / Unit S / 3024 EJ Rotterdam
+31 10 282 99 30 / www.denijl.nl / mail@denijl.nl

Gentbrugge II

Opdrachtgever: Thuispunt Gent

OMGEVINGSVERGUNNING

BA_GBII_G_N_292_GB Tuinbergingen gevels

Formaat	Schaal	Architecten	Datum	Gewijzigd	Projectnummer	Fase	Tekeningnummer
A2	1 : 100	M.d.B.	01-12-2025	-	506	BA	292