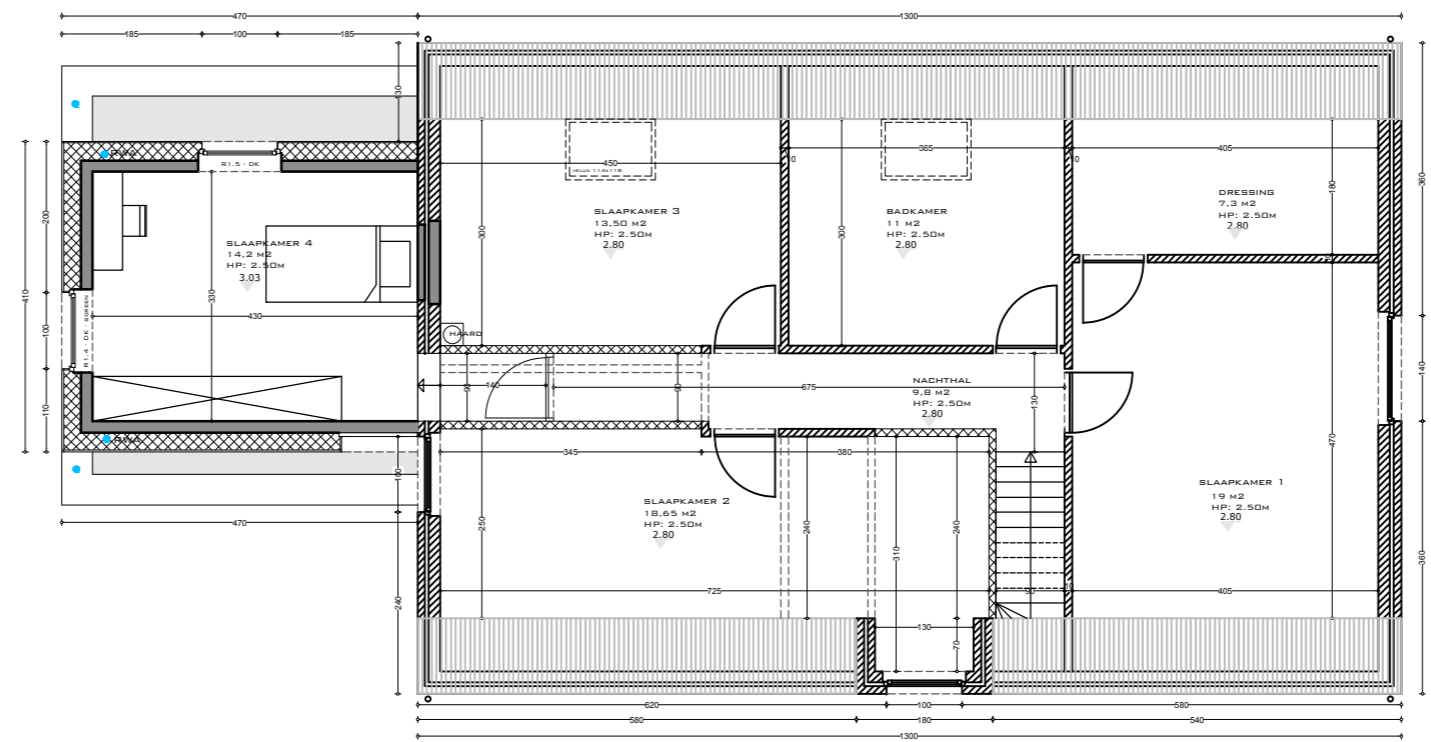




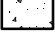



**ZIE BIJZONDERE  
VOORWAARDE(N)**




TOTAAL  
BRUTO OPP: 130,9 M2  
NETTO OPP: 96,7 M2

**LEGENDE**

-  BESTAANDE MUREN
-  YTONG
-  NIEUW METSELWERK
-  ISOLATIE
-  BETON
-  HOUTEN GEVELBEKLEDING

DIT DOCUMENT IS EIGENDOM VAN BLEYENBERG SOFIE EN MAG ONDER GEEN ENKELE VOORWAARDE ZONDER SCHRIFTELIJKE TOELATING, GEDUPLICEERD OF DOOR DERDEN WORDEN UITGEVOERD

	<p>Soffice architectuur bv Boonstede 13 9031 Drogen info@soffice.be +32 475 30 59 41</p>	<p><b>BOUWHEER</b> Pieter en Lore Steyaert - Lust Koningsvarenweg 24 9031 Drogen +32 496 33 13 21</p>	<p><b>WERFADRES</b> Pieter en Lore Steyaert - Lust Koningsvarenweg 24 9031 Drogen +32 496 33 13 21</p>	<p><b>FASE - BOUWAANVRAAG</b> VERDIEPINGSPLAN NT 1/100</p>	<p><b>DOSSIER 248.04 - 24</b></p> <p style="text-align: right;">DD. 29/03/2024</p>
---	--	---	--	--	--